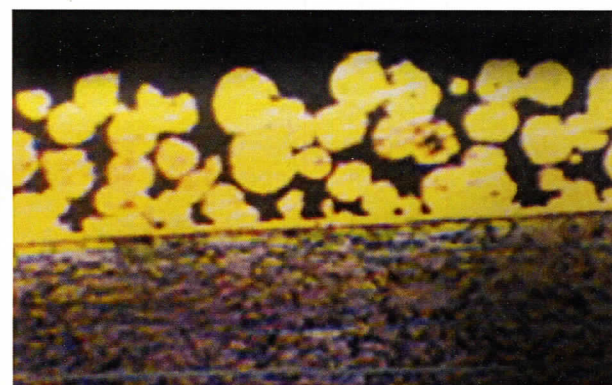


# EZI GLIDE<sup>(Ezu)</sup>



## EZU SELF LUBRICATING BUSHING ( SF-1 MATERIAL)

- DRY GOOD
  - OILED GOOD
  - GREASED GOOD
  - WATER FAIR
- Dry or trace of oil or grease only required



1. PTFE/pb wear surface, 0.01-0.03mm, provides an initial transfer film, which effectively coats the mating surface on the bearing assembly, forming an oxide type solid lubricant film.
2. Sintered bronze interlay, 0.20-0.35mm, provides maximum thermal conductivity away from the bearing surface, also serves as a reservoir for PTFE-Lead wear surface.
3. Low-carbon steel, backing, gives exceptionally high load carrying capacity, excellent heat dissipation
4. Copper/Tin plating 0.002mm, provides good corrosion resistance

MAX LOAD	STATIC	250 N/mm <sup>2</sup>
	VERY LOW SPEED	140 N/mm <sup>2</sup>
	ROTATING OSCILLATING	60 N/mm <sup>2</sup>
MAX PV DRY RUNNING	SHORT TERM	3.6 N/mm <sup>2</sup> * m/s
	CONTINUOUS OPERATION	1.8 N/mm <sup>2</sup> * m/s

FRICTION COEFFICIENT		0.03-0.20
MAXIMUM SPEED	Dry	2 m/s
	HYDRODYNAMIC	>2 m/s
SHAFT SURFACE FINISH - Ra		em = 0.4
SHAFT HARDNESS		HB > 200
TEMPERATURE LIMIT		-195°C- +280°C

# SIL

## SEAL IMPORTS

IMPORTERS AND STOCKISTS OF:

HYDRAULIC AND PNEUMATIC SEALS, O-RINGS, BUSHES AND ROTARY OIL SEALS

NEW ZEALAND

Auckland | Hamilton | Wellington | Christchurch | Dunedin

[www.sealimports.co.nz](http://www.sealimports.co.nz)

AUSTRALIA

Brisbane | Townsville | Melbourne | Sydney | Adelaide

[www.sealimports.com.au](http://www.sealimports.com.au)